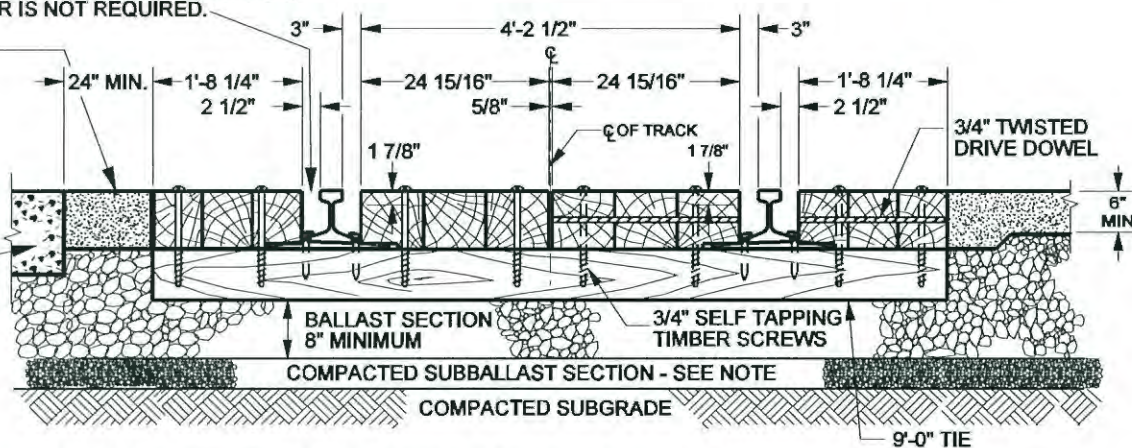


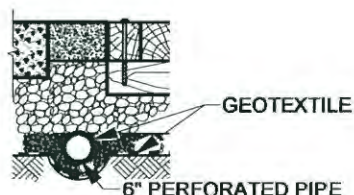
ON PUBLIC CROSSINGS, USE APPROVED RUBBER FLANGE WAY FILLER. ON PRIVATE CROSSINGS, FLANGEWAY FILLER IS NOT REQUIRED.

7" MINIMUM TOPPING OF ASPHALTIC CONCRETE OR ASPHALT INSTALLED IN NO MORE THAN 3" LIFTS

CONCRETE PAVEMENT

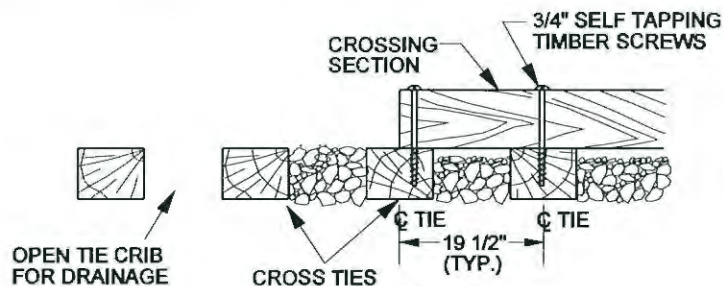


SECTION A-A (THROUGH CROSSING WITH TIMBER TIES)



NOTE: PERFORATIONS TO BE PLACED DOWNWARD NEAR FLOW LINE OF PIPE.

SECTION WITH DRAIN



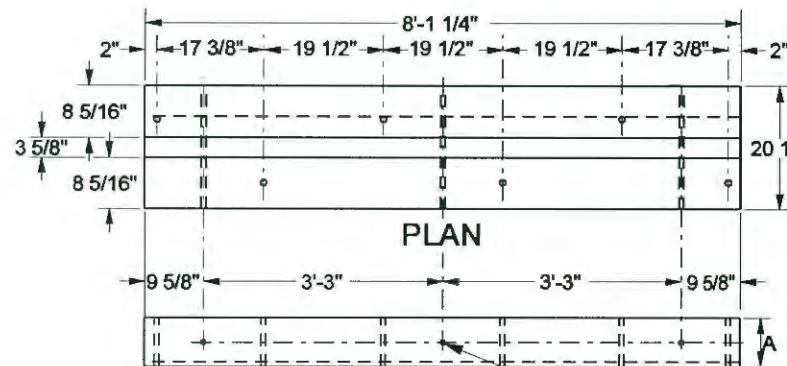
SECTION B-B

NOTES:

1. CROSSING PANELS MUST BE EVENLY SUPPORTED ON ALL TIES. TRACK STRUCTURE INCLUDING RAIL, OTM, TIES, BALLAST AND ROADBED MUST BE IN EXCELLENT CONDITION. ALL TIES MUST BE 9' LONG, SPACED AT 19 1/2" CENTERS AND EXTEND FIVE TIES BEYOND END OF CROSSING. NEW 7" X 9" X 9'-0" TRACK TIES TO BE INSTALLED IF NECESSARY.
2. CROSSING SITE IS TO BE INSPECTED PRIOR TO START OF INSTALLATION TO DETERMINE THAT PROPER DRAINAGE AND SURFACE SUPPORT IS PROVIDED, TRACK GRADE IS UNIFORM AND EXISTING TIES ARE AT LEAST 9' LONG.
3. IF CONDITIONS WARRANT, SITE IS TO BE OVER-EXCAVATED AND CROSSING DRAINAGE SYSTEM INSTALLED USING COMPACTED, WELL GRADED GRANULAR FILL, SUBBALLAST, GEOTEXTILE AND PERFORATED DRAINAGE PIPE (IF REQUIRED) INSTALLED PER DETAILS OF THIS DRAWING.
4. ADDITIONAL SITE DRAINAGE INCLUDING PROPER DRAINAGE AT EACH QUADRANT OF CROSSING SHALL BE COMPLETED TO ENSURE CROSSING DRAINAGE.
5. RAIL JOINTS TO BE LOCATED TO FALL OUTSIDE THE CROSSING AREA A MINIMUM OF 15'-0" FROM END OF CROSSING TIMBER.

SEE PAGE 2 FOR THE REST OF THE NOTES





HOLES FOR 3/4" SELF TAPPING TIMBER SCREWS

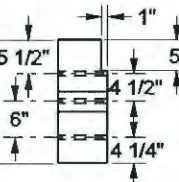
SIDE VIEW

HOLES FOR 3/4" TWISTED DRIVE DOWELS

FIELD TIMBER PANEL A

MATERIAL FOR ONE SECTION

- 2 - A x 8 1/2" x 8'-1 1/4" TIMBERS
- 3 - 3/4" x 19 1/2" TWISTED DRIVE DOWELS
- 6 - 3/4" x 12" SELF TAPPING TIMBER SCREWS
- 1 - A x 3 1/4" x 8'-1 1/4" TIMBER



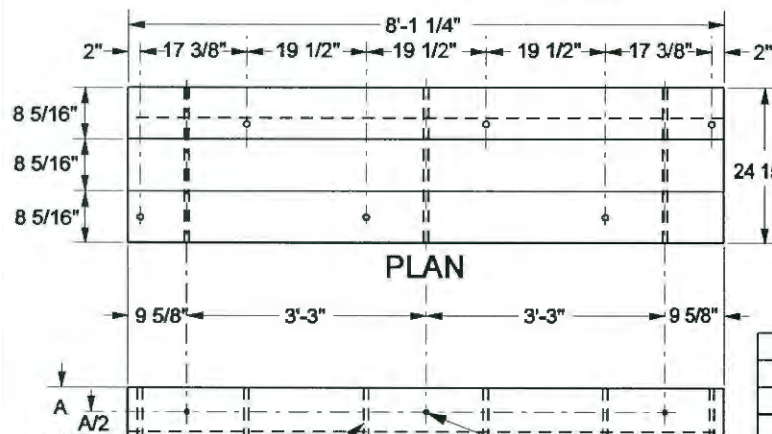
END VIEW

DIMENSION CHART

*RAIL SIZE	A	SCREWS
131# - 141#	8"	3/4" x 13"
110# - 119#	7 3/8"	3/4" x 13"
90# & 100#	6 3/4"	3/4" x 12"

* RAIL SHALL BE AT LEAST 115# FOR A MINIMUM LENGTH OF 20' BEYOND THE EDGE OF TRAVELED WAY

SUBBALLAST NOTE:
SUBBALLAST SECTION TO BE A MINIMUM OF 4" WHEN RENEWING EXISTING CROSSING. FOR NEW CONSTRUCTION, SUBBALLAST SECTION TO BE IN ACCORDANCE WITH CONSTRUCTION DESIGN STANDARDS OR AS REQ'D. BY STATE OR LOCAL AGENCIES.



HOLES FOR 3/4" SELF TAPPING TIMBER SCREWS

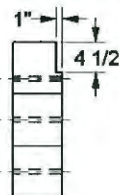
SIDE VIEW

HOLES FOR 3/4" TWISTED DRIVE DOWELS

GAGE TIMBER PANEL B

MATERIAL FOR ONE SECTION

- 3 - A x 8 1/2" x 8'-1 1/4" TIMBERS
- 3 - 3/4" x 24" TWISTED DRIVE DOWELS
- 6 - 3/4" x 13" SELF TAPPING TIMBER SCREWS



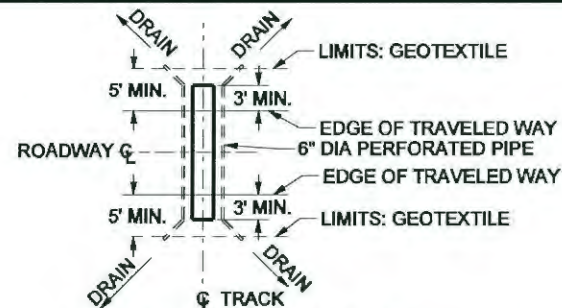
END VIEW

REQUIRED COMPONENTS

RAIL WEIGHT	90#-100#	110#-119#	131#-141#
4 PIECE SET	540-3500	540-3900	540-4300
FIELD TIMBER PANEL A	540-3600	540-4000	540-4400
GAGE TIMBER PANEL B	540-3700	540-4100	540-4500
3/4" SELF TAP TIMBER SCREWS	130-5400	130-5402	

OPTIONAL COMPONENTS

20' SECTION 6" PERFORATED PIPE	510-3201
6" ADJUSTABLE PIPE ELBOW	510-3557
6" PIPE CONNECTOR BAND	510-3379
100' ROLL GEOTEXTILE	550-0119
FLANGWAY RUBBER	540-1950



TYPICAL PIPE LAYOUT

NOTES (CONTINUED FROM PAGE 1):

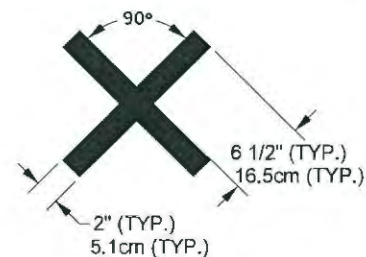
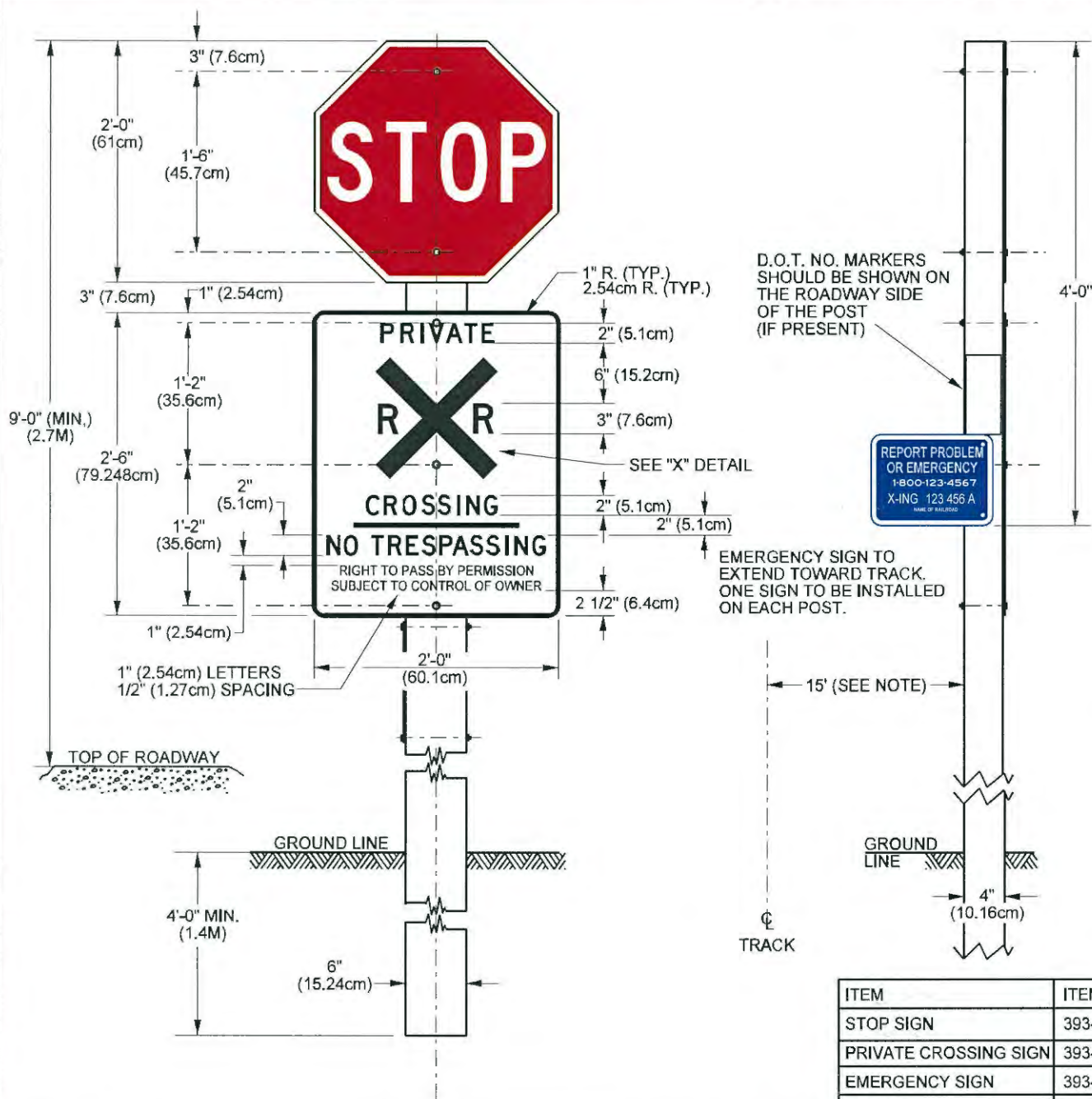
FABRICATION AND TREATMENT:

- CROSSING SECTIONS TO BE FABRICATED AND ASSEMBLED TO AVOID ANY CUTTING OR FITTING AT THE POINT OF INSTALLATION. SECTIONS TO BE PREDRILLED WITH 1/2" HOLES AND TRANSVERSELY DOWELED WITH 3/4" TWISTED DRIVE DOWELS. EACH PLANK TO BE FRAMED, BORED AND TREATED WITH A P2 SOLUTION TO 8 LBS. PER CUBIC FOOT RETENTION PRIOR TO ASSEMBLY INTO CROSSING SECTION. PLACE THE CROSSING SECTION MARK ON THE END OF ALL SECTIONS. EACH MARK TO HAVE A SUFFIX DENOTING RAIL SIZE AS SHOWN UNDER CATEGORIES IN DIMENSION CHART.

MATERIALS AND INSTALLATION:

- REQUISITIONS FOR PREFABRICATED CROSSING SECTIONS TO BE MADE SPECIFYING THE NUMBER OF EACH TYPE OF SECTION REQUIRED (A OR B) AND THE WEIGHT OF RAIL WITH WHICH IT IS TO BE USED (133, 131, ETC.) AS DENOTED IN THE DIMENSION CHART UNDER CATEGORIES. DRILLING TO START AT THE CENTERLINE OF CROSSING AND WORK TOWARDS THE ENDS.
- GEOTEXTILE AND PIPE TO BE INSTALLED ONLY AT LOCATIONS WHERE REQUIRED BY STATE OR LOCAL AGENCIES OR WHERE DESIGNATED BY CHIEF ENGINEER.
- REPORT CROSSING GATE MALFUNCTIONS TO 24 HR UPRR CROSSING HOT LINE AT 1-800-848-8715.
- ALL EXCEPTIONS TO THIS PLAN MUST BE APPROVED BY THE CHIEF ENGINEER.





DETAIL "X"

NOTES:
PRIVATE CROSSING SIGN TO BE 3290 SILVER 3M HIGH INTENSITY GRADE BACKGROUND ON .080" SHEET ALUMINUM.
AT ALL PRIVATE ROADWAY GRADE CROSSINGS WHERE THE GENERAL PUBLIC HAS ACCESS AND ARE NOT OTHERWISE EQUIPPED WITH TRAIN ACTIVATED WARNING DEVICES, ONE SIGN IS TO BE PLACED TO THE RIGHT OF EACH APPROACH. THE SIGNS ARE NOT INTENDED FOR USE AT IN-PLANT INDUSTRIAL CROSSINGS, CROSSINGS BETWEEN FARM FIELDS OR SIMILAR RESTRICTED LOCATIONS, EXCEPT IN STATES WHERE REQUIRED BY LAW.

SIGN LOCATION SHOULD BE APPROXIMATELY 15' (4.6M) FROM THE CENTERLINE OF THE NEAREST TRACK WITH THE CENTER OF POST NO LESS THAN 8' (2.4M) FROM THE EDGE OF THE TRAVELED ROADWAY. POSITION THE SIGN TO PROVIDE THE BEST VIEW FROM THE ROADWAY APPROACH BASED ON ENGINEERING JUDGEMENT.

FOR STOP SIGN, SEE STD DWG 0547
FOR LETTERING, SEE STD DWG 0501
FOR MOUNTING, SEE STD DWG 0599
FOR EMERGENCY SIGN, SEE STD DWG 0530

ITEM	ITEM NO.
STOP SIGN	393-5896
PRIVATE CROSSING SIGN	393-3510
EMERGENCY SIGN	393-1355
POST	505-1621

IMGRAIL
CONSULTING



5. REFERENCE STD DWGS 0529 AND 0531 FOR WHERE TO MOUNT. REFERENCE STD DWG 0599 FOR MOUNTING HARDWARE.



DESCRIPTION	ITEM NO.
BLANK DOT #	393-1355
PRE-PRINTED DOT #	393-1356